

Tororaro



3 BEDROOMS



1 LIVING ROOM



1 TOILET



1 BATHROOM



2 CAR GARAGE



1 WALK-IN ROBE



LAUNDRY

3 Bdrm / 160m²

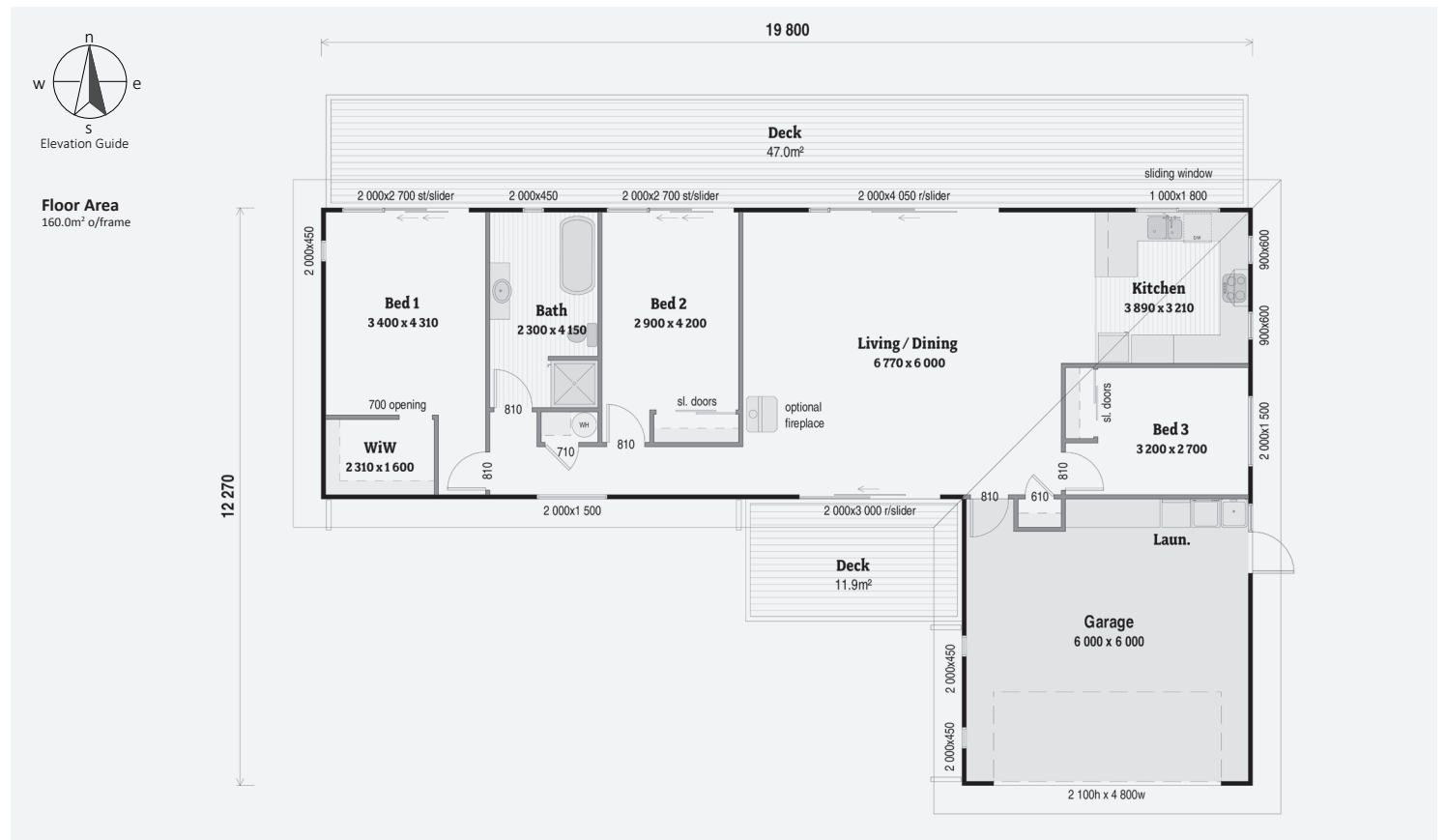
Simple yet effective design makes highly efficient use of space, with open plan living/dining/kitchen, and decking the full length of the back of the house. The design is easy to tailor to your needs, and the functional bathroom is ideal for a young family.



Artists Impression Only

KEY FEATURES OF THIS HOME

- Bevelback weatherboard cladding
- Open plan living
- Flexibility to be a transportable home
- Double garage





Floor Area
160.0m² o/frame

12 270

19 800

